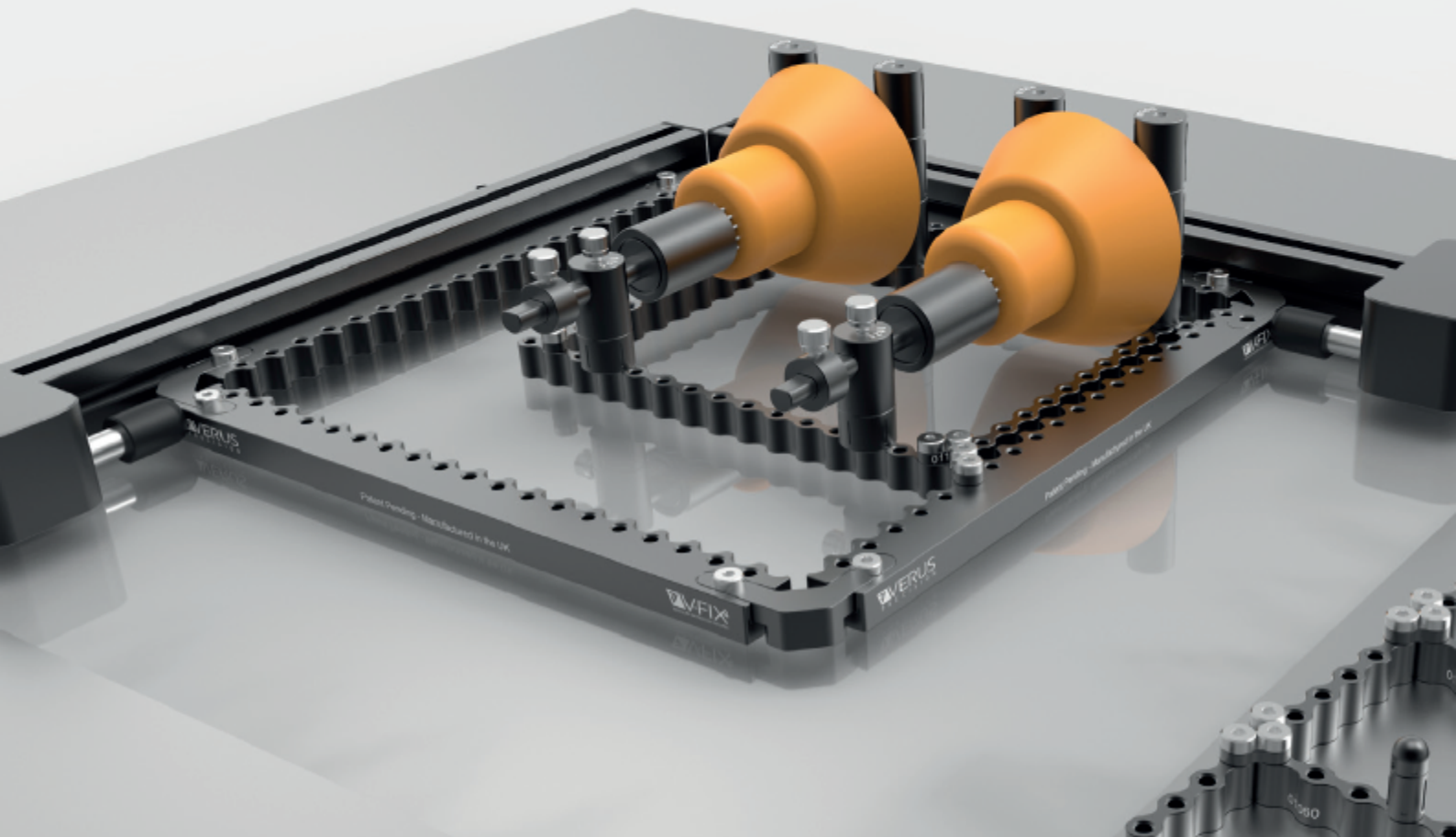


# V-FIX<sup>4</sup><sup>TM</sup>

MODULAR METROLOGY FIXTURES



## CATALOGUE 2021

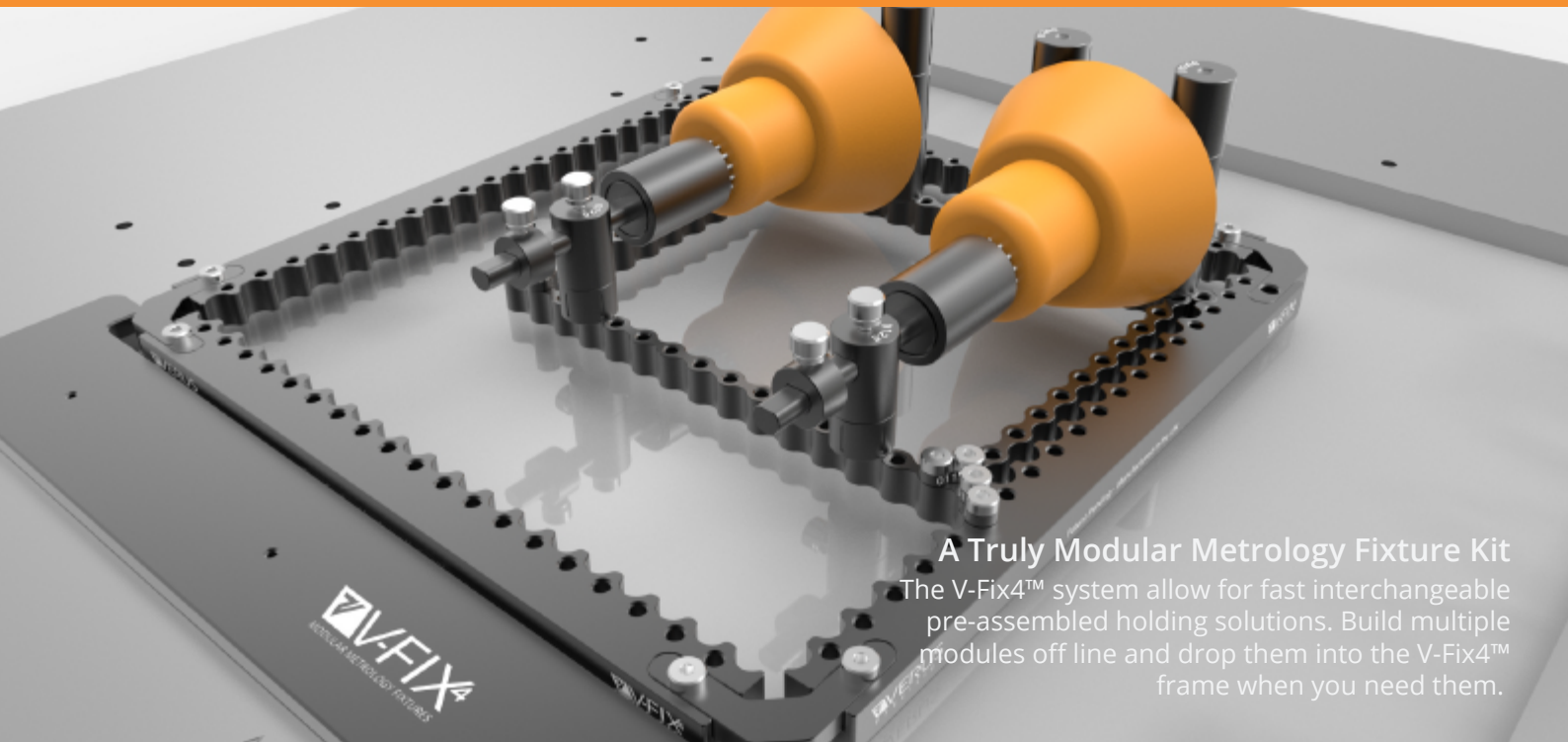
Issue 1



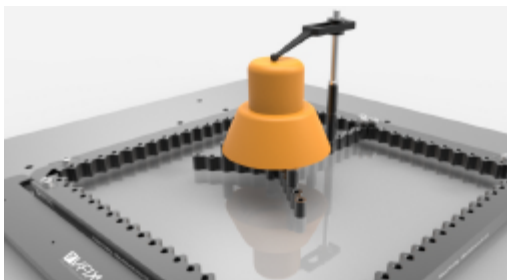
A Verus Metrology Partners Product

Designed and Manufactured in the UK and Ireland

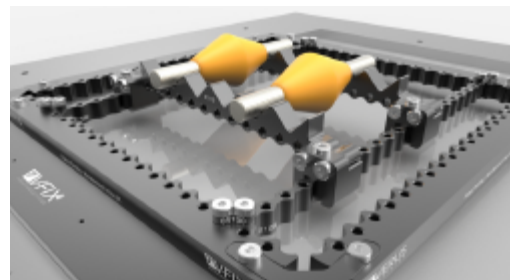
Patent: [www.verusmetrology.com/patent](http://www.verusmetrology.com/patent)



**A Truly Modular Metrology Fixture Kit**  
The V-Fix4™ system allow for fast interchangeable pre-assembled holding solutions. Build multiple modules off line and drop them into the V-Fix4™ frame when you need them.



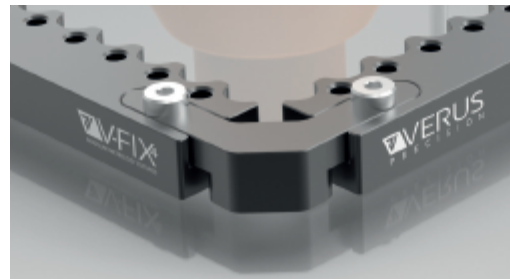
**Maximum Measurement Access**  
Minimum visual interference due to the unique skeletal system design which requires no base plate.



**Completely Flexible**  
All system components can be assembled in multiple orientations and configurations.



**Scalable to Your Specification**  
Modular design allows rapid extension of kit scale and functionality to accommodate multiple machine and component geometries.



**High Quality Precision Manufacture**  
Hard anodised aluminium construction for durable, robust and repeatable use. Designed and manufactured in the UK and Ireland.

## Pricing

| Kit  | Size      | Price     |
|------|-----------|-----------|
| 1515 | 150x150mm | £1,830.00 |
| 2015 | 200x150mm | £1,860.00 |
| 2020 | 200x200mm | £1,865.00 |
| 3015 | 300x150mm | £1,890.00 |
| 3020 | 300x200mm | £1,905.00 |
| 3030 | 300x300mm | £1,960.00 |

## All kits include:

| Product Name                 | Part Number | Size             | 1515 Kit | 2015 Kit | 2020 Kit | 3015 Kit | 3020 Kit | 3030 Kit |
|------------------------------|-------------|------------------|----------|----------|----------|----------|----------|----------|
|                              |             |                  | Qty      | Qty      | Qty      | Qty      | Qty      | Qty      |
| Outer Rail                   | 4-001       | 150mm            | 4        | 2        | 0        | 2        | 0        | 0        |
| Outer Rail                   | 4-002       | 200mm            | 0        | 2        | 4        | 0        | 2        | 0        |
| Outer Rail                   | 4-003       | 300mm            | 0        | 0        | 0        | 2        | 2        | 4        |
| Inner Rail                   | 4-004       | 50mm             | 6        | 6        | 6        | 6        | 6        | 6        |
| Inner Rail                   | 4-005       | 100mm            | 4        | 4        | 4        | 4        | 4        | 4        |
| Inner Rail                   | 4-006       | 150mm            | 2        | 2        | 0        | 2        | 0        | 0        |
| Inner Rail                   | 4-007       | 200mm            | 0        | 0        | 2        | 0        | 2        | 0        |
| Inner Rail                   | 4-008       | 300mm            | 0        | 0        | 0        | 0        | 0        | 2        |
| Vee Rails                    | 4-009       | 150mm            | 2        | 2        | 2        | 2        | 2        | 2        |
| Outer Rail Corner Connectors | 4-010       |                  | 4        | 4        | 4        | 4        | 4        | 4        |
| Inner Connectors             | 4-011       | 2 Hole           | 12       | 12       | 12       | 12       | 12       | 12       |
| Inner Connectors             | 4-012       | 3 Hole           | 12       | 12       | 12       | 12       | 12       | 12       |
| Inner Connectors             | 4-013       | 4 Hole           | 4        | 4        | 4        | 4        | 4        | 4        |
| Upstands                     | 4-015       | Ø7x20mm          | 6        | 6        | 6        | 6        | 6        | 6        |
| Upstands                     | 4-016       | Ø7x15mm          | 6        | 6        | 6        | 6        | 6        | 6        |
| Upstands                     | 4-017       | Ø7x10mm          | 6        | 6        | 6        | 6        | 6        | 6        |
| Upstands                     | 4-018       | Ø15x20mm         | 4        | 4        | 4        | 4        | 4        | 4        |
| Upstands                     | 4-019       | Ø15x15mm         | 4        | 4        | 4        | 4        | 4        | 4        |
| Upstands                     | 4-020       | Ø15x10mm         | 4        | 4        | 4        | 4        | 4        | 4        |
| Dome Head Pin                | 4-021       | Ø7 Full Rad      | 4        | 4        | 4        | 4        | 4        | 4        |
| Adjustable Jill Stand        | 4-022       | Ø15x20-30mm      | 2        | 2        | 2        | 2        | 2        | 2        |
| Pogo Multi-Clamp             | 4-023       | 90°x25 Pin       | 1        | 1        | 1        | 1        | 1        | 1        |
| Convertor Block              | 4-024       | 90°              | 4        | 4        | 4        | 4        | 4        | 4        |
| Adjustable Peek Clamp        | 4-026       | Variable         | 6        | 6        | 6        | 6        | 6        | 6        |
| Clamp Post                   | 4-027       | 45mm             | 6        | 6        | 6        | 6        | 6        | 6        |
| Corner Dock                  |             | Machine Specific | *        | *        | *        | *        | *        | *        |
| *Optional                    |             |                  |          |          |          |          |          |          |



A Verus Metrology Partners Product

Designed and Manufactured in the UK and Ireland

Patent: [www.verusmetrology.com/patent](http://www.verusmetrology.com/patent)

## What they do



### Outer Rails

The Outer Rails come in four sizes; 150mm, 200mm, 250mm and 300mm which can be assembled to suit all measurement machine types.



### Inner Rails

The Inner Rails come in sizes ranging from 50mm to 300mm stepping in 50mm increments.



### Inner Vee Rail

The Inner Vee Rail is 150mm and consists of 6 chambers. Combined with the Convertor both horizontal and vertical options are possible.



### Horizontal Pogo

Completely unique to the V-FIX<sup>4</sup>™ system is our Horizontal Pogo. The Horizontal Pogo facilitates clamping on complex geometries as each pin can move independently.



### Adjustable Peek Clamp

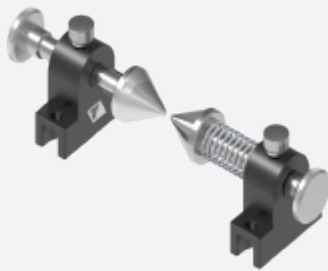
The Adjustable Peek Clamp allows a multitude of positioning scenarios, while the Peek material is both flexible and non-abrasive to the component being held.



### Clamp Post

The Clamp Post is used in conjunction with the Adjustable Peek Clamp and if needed the Upstands to reach any height and position needed.

## What they do



### Adjustable Centres

The V-FIX4™ Centres are sprung loaded with the centres being interchangeable to accommodate component variation. Comes with 2 sets of centres.



### Jill Stand

The V-FIX4™ Jill Stand allows varying height positions which can be locked once set.

Ø15 X 25-30mm



### Upstands Ø7mm

Available in the sizes below the Upstands can be used across the entire V-FIX4™ system.

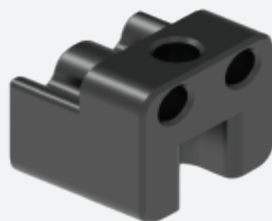
Ø7 X 10mm - Ø7 X 15mm - Ø7 X 20mm



### Upstands Ø15mm

Available in the sizes below the Upstands can be used across the entire V-FIX4™ system.

Ø15 X 10mm - Ø15 X 15mm - Ø15 X 20mm



### Convertor

Converts any horizontal module to a vertical orientation and can be used across the entire V-FIX4™ system.



### Dome Head Pin

Allows single point contact for component setup.

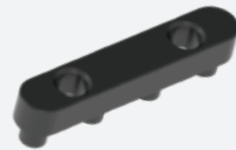
Ø7 X 6.5mm

## What they do



### Corner Connector

The Corner Connector allows repeatable assembly of the Outer Rails system.



### Straight Connector

The Straight Connector allows repeatable assembly and expansion of the Outer Rail system.



### 2 Slot Connector

Used to secure all V-FIX<sup>4</sup>™ assemblies.



### 3 Slot Connector

Used to secure all V-FIX<sup>4</sup>™ assemblies.



### 4 Slot Connector

Used to secure all V-FIX<sup>4</sup>™ assemblies.



### Corner Dock

Our proprietary Corner Dock system can be used to dock a V-FIX<sup>4</sup>™ into a corner of your measurement system\*.

\*Machine must be specified